

VISUAL STORY FOR THE RELAXED  
PERFORMANCE OF

# FANTASTICALLY GREAT WOMEN

*who changed the world*

THE MUSICAL



# INDEX

Information about the show .....	Page 2
Information about the auditorium.....	Page 3
Things to look out for.....	Page 4
Characters in the show.....	Page 5
The story .....	Page 10

This guide has been made to help you prepare for your trip to see the relaxed performance of **Fantastically Great Women Who Changed the World** with some information about what to expect. We hope you enjoy the performance! If you have any more questions please contact [office@kennywax.com](mailto:office@kennywax.com) or call **0207 437 1736**.





# INFORMATION ABOUT THE SHOW

## LENGTH OF SHOW


**Fantastically Great Women Who Changed the World** is 80 minutes with no interval.

## CHANGES FOR THE RELAXED PERFORMANCES

 There will be an open door policy throughout the show so that you can come and go.

 The show is about 80 minutes long. There is no interval.

! The production contains loud music, sound effects and audience interaction.

 The house lights will stay on throughout the performance.

## THINGS TO LOOK OUT FOR

We have adjusted some elements of the show for the relaxed performance including:

We will keep the main lights on in the auditorium so that it doesn't get too dark.

The show has a lot of colourful lights. Some pieces of the set light up.

It is okay if you find flashing lights stressful. You might want to bring sunglasses if you do not like flashing lights. You do not have to bring sunglasses.

There is a lot of music, singing and sound effects. We have turned the sound levels down so it doesn't get too loud.

It is okay if you find loud noises stressful. You might want to bring ear defenders, noise-cancelling headphones or ear plugs. You do not have to bring any of these things. If you do not own these things, you could contact the theatre and ask if they have any you could borrow.

## WHAT IS THE SHOW ABOUT?

The show **Fantastically Great Women Who Changed The World** is inspired by the book of the same name by **Kate Pankhurst**.

The book looks at some women from history and how their actions changed the world. The book is fact based with beautiful illustrations.

In our stage version, we have created the character of Jade, a school girl who gets separated from her class on a school trip to a museum. She runs into The Gallery of Greatness where the women from the book come to life and inspire her to change the world in whatever way she wants to. We have a live band in the show as well who play along to the songs.

# INFORMATION ABOUT THE AUDITORIUM, THE STAGE AND THE SET:

The auditorium is the part of the theatre where the audience sit when they are watching the play. The stage is the area where the actors perform the show. The set is the name for the scenery, furniture and objects used on stage during a show.

This is a picture of what the stage will look like when you come into the auditorium.

The blue sheet with the pictures on it will be removed and there is a set behind, where the musicians sit and play their instruments. Here is a picture.



# CHARACTERS IN THE SHOW

There are five adult female actors in the show.

Four of the adult actors multi-role. This means that they each play more than one character. You will be able to tell when they change character because they will change costume and accent.

We also have three band members – one who plays piano, one who plays piano and percussion and one who plays the drums.



## **GEORGIA GRANT-ANDERSON:** **Jade.**

This is Georgia. She is an actor. Georgia plays:



Jade



## **CHARLOTTE JACONELLI:** **Gertrude Ederle, Jane Austen,** **Mary Anning, Miss Richards.**

This is Charlotte. She is an actor. Charlotte plays:



Gertrude  
Ederle



Jane Austen

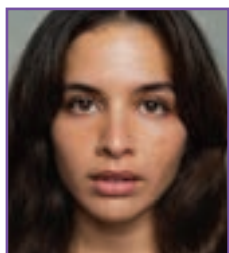


Mary Anning



Miss Richards

# CHARACTERS IN THE SHOW



## **ELENA BRESCHI:**

**Sacagawea, Frida Kahlo, Marie Curie, Miss Morris.**

This is Elena. She is an actor. Elena plays:



Sacagawea



Frida Kahlo



Marie Curie



Miss Morris



## **MEG HATELEY:**

**Emmeline Pankhurst, Agent Fifi, Miss Johnson.**

This is Meg. She is an actor. Meg plays:



Emmeline  
Pankhurst



Agent Fifi



Miss Johnson

# CHARACTERS IN THE SHOW



## **ANELISA LAMOLA:**

**Amelia Earhart, Rosa Parks, Mary Seacole, Miss Ashley.**

This is Anelisa. She is an actor. Anelisa plays:



Amelia  
Earhart



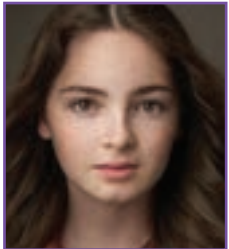
Rosa Parks



Mary Seacole



Miss Ashley



## **AALIYAH MONK:**

**Anne Frank**

This is Aaliyah. She is an actor.



Anne Frank

# CHARACTERS IN THE SHOW

All the adult actors also play supporting characters / dancers in the songs:

These are the actors in their teacher costumes:



These are the actors as back up dancers in **DEEDS NOT WORDS**:



These are the actors in their costumes for **WORLD OF COLOUR**:



These are the actors in their costume for **FANTASTICALLY GREAT**:





# CHARACTERS IN THE SHOW



## **SUMMER PRIEST :**

### **Swing.**

This is Summer. She is an actor. She will cover another actor if they are unwell or not able to perform. This means she could appear in any of the roles.



## **RACHEL SEIRIAN:**

### **Swing.**

This is Rachel. She is an actor. She will cover another actor if they are unwell or not able to perform. This means she could appear in any of the roles.

# CHARACTERS IN THE SHOW

**These are the band members:**



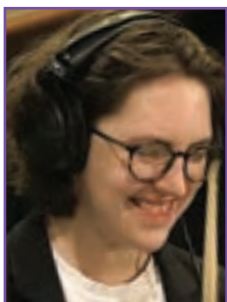
**AUDRA CRAMER:**  
**Musical Director on keys.**

Audra is the Musical Director. This means she teaches the company the music for the show and does rehearsals on tour. Audra also plays the keys in the show. You will see her in one of the boxes on the right-hand side of the set.



**NICOLA T. CHANG:**  
**Keys 2 & Percussion.**

Nicola is the Assistant Musical Director and plays the piano and percussion in the show. During the song World of Colour, Nicola puts on a jacket and climbs down from the platform onto the stage to play percussion.



**ISIS DUNTHORNE:**  
**Drummer.**

Isis is a drummer. They sit on a platform with their drum kit.

**These are the band in their costumes -**



# THE STORY

## SPOILER ALERT

Below is a summary of the story which means we tell you what will happen. This might be helpful to know before you come to the theatre.

If you want the story to be a surprise, we suggest that you do not read these pages.

Please don't share these with other people as they might want the surprise.

There are things about the show which we have changed from the books. This is to tell the story in a theatre and make it longer. You can learn about these bits in the summary.

**Fantastically Great Women Who Changed the World** starts with the actors entering through the auditorium as teachers. They pretend that the audience are children from their school and that they are arriving at the museum on a school trip. They are dressed in large trench coats and start to sing the opening number, **Quiet Children**. The opening song has colourful flashing lights and halfway through the teachers take off their big coats and start dancing to the song. At the end of the song the teachers leave with one of them picking up all the coats and running behind the others.



Next, Jade runs into the auditorium. She is wearing school uniform and has a rucksack on her back. When she gets on to the stage, she realises that her class and teachers are nowhere to be seen. Behind her, there is a large sign that says 'Gallery of Greatness. Exhibition Coming Soon'. There is a voiceover. It is like an announcement that you would hear in a museum explaining the rules of the museum. Jade imagines that the voiceover is bossing her around and telling her what to do.

Jade sings a song called **I'm Here**.

After the song, Jade goes in to the Gallery of Greatness.

There is then a loud crashing sound and the lights begin to flash. The curtain lifts up and we can see Amelia Earhart dressed in a green flying jacket. Amelia introduces herself and says she is lost. She asks Jade if she is lost too and Jade explains that everyone has forgotten about her. Amelia gets a few of her adventuring friends to join them – Sacagawea and Gertrude Ederle. Sacagawea and Gertrude Ederle both introduce themselves and talk about how Sacagawea guided famous explorers, Lewis and Clark across America by foot and Gertrude Ederle swam the channel.

Amelia, Gertrude and Sacagawea sing a song called **Where Do You Want To Go**. During the song, the actor playing Sacagawea climbs up the side of the set and the actor playing Gertrude Ederle gets on top of a box. This might look scary but both are safe.



# THE STORY

Next, Emmeline Pankhurst enters. Jade is very excited after the song and wants to be an explorer too. Emmeline suggests she focuses on her attention to things at home instead, and explains about her work changing the rights of women and getting them to be allowed to vote. Emmeline and the other actors then sing a song called **Deeds Not Words**. The other actors come on in similar costumes to Emmeline's and sing and dance with her.



After the song, Emmeline explains how some women did manage to get the vote and Jade is inspired to fight for her rights. She sits down and begins writing in her notebook. Jade begins reading aloud what she is writing. She is trying to persuade her parents to buy her a dog. While she is doing this, the actor playing Jane Austen sneaks onto stage. Jane interrupts Jade's writing by suggesting she use a line from one of Jane Austen's books. Jane introduces herself and talks about writing. Frida Kahlo then walks onstage with a paint bucket and introduces herself. Frida Kahlo tells Jade a bit about her life and what it means to be an artist.

Frida then sings a song called **A World of Colour** with Jane and the other actors come on too. During the song, Nicola in the band comes down and begins playing parts of the set like drums. At the end of the song, Frida, Jane and Jade talk about art that Jade could create and Jade thinks she might become an artist.



Then Jade decides that she isn't good at anything like drawing or painting. She wishes she had superpowers instead, or a team of superheroes to help her. She remembers three women from history who were all called Mary, and wishes they would come and help her.

Mary Anning, Mary Seacole and Marie Curie all enter the stage dressed as superheroes and sing a song called **Mary, Mary and Marie**. They are joined by Agent Fifi. The song is Jade imagining what these women did, but she doesn't really know what they achieved. At the end of the song, the Marys and Agent Fifi are very confused about what has just happened. They decide to tell Jade what they really did in history.



Jade apologises for getting their stories wrong. She asks Agent Fifi if she got her story wrong too. Agent Fifi and the Marys sing another song explaining that Fifi really was a super spy and her real name was also Marie. They explain that they were ordinary women, not superheroes, and Jade can do anything they can. Then they leave.

# THE STORY



The museum voiceover is heard again. It says that the museum is closed and then Jade imagines it bossing her around again. Meanwhile, Rosa Parks comes and sits on a box on stage and invites Jade to sit next to her.

Jade knows who Rosa Parks is and then explains how she boycotted segregated buses. Segregated means when black and white people were kept separate. Rosa talks to Jade about how she is feeling and how Jade might change the world.

Anne Frank comes in from the opposite side of the stage and sits on a box writing in her diary. Rosa points to her and Jade knows who she is too. Anne comes and sits next to them on the box.

Rosa sings a song called **Rosa's Lullaby** with Anne.

At the end of the song, Anne leaves. Rosa talks some more about the different people Jade has already met and how not all have happy endings, but they still changed the world in some way. Rosa gives Jade a membership card and welcomes Jade into the ranks of **Fantastically Great Women Who Changed the World**. Rosa leaves the stage.

Miss Johnson, Jade's teacher comes on stage and is relieved to have found her. Jade asks Miss Johnson how she changed the world and Miss Johnson turns out to be Agent Fifi.

Miss Johnson takes off her coat and becomes Meg, the actor. She starts singing the song **Fantastically Great**. The other actors join them on stage in different costumes and they all sing. In the middle of the song, big light-up letters spelling "GREAT" are brought on stage and the actors move them into different positions on stage to spell different things.

The show ends with all the actors at the front of stage singing together in a group. The cast then sing the megamix, which is a mashup of all the songs from the show.



# THINGS TO LOOK OUT FOR

We have picked out some moments from the show where things are loud or lights flash which it may help to know about in advance. We have also tried to give rough timings of when these happen in the show, but they may be a little bit before or after:

## THROUGHOUT THE SHOW

The arrows around the set which get revealed will all light up and flash throughout the show.

The boxes around the band will light up and change colour throughout the show.

The first few rows of the stalls will have lots of flashing lights in their eyes, even in the relaxed performances. If you are sitting in these rows, you might find sunglasses helpful but you do not have to wear them.

The band will sit in boxes on top of the set. This is very safe and they have help getting in and out of them. There is only one moment when does not stay in her box which is explained below:

## MOMENTS TO WATCH OUT FOR

- Start of the show: the actors come through the audience dressed as teachers and start the song *Quiet Children*.
- 3 mins in: the character of Jade runs through the audience to catch up to the teachers.
- 8 mins in: there are flashing lights and crashing noises as if a plane had crashed and the front cloth is lifted away.
- 30 mins in: Emmeline Pankhurst shouts out to the audience. Some people may boo/cheer when she says different things but you don't have to.
- 32 mins in: Jane Austen emerges from a box and there is a loud slam when the lid of the box drops.
- 34 mins in: Frida Kahlo enters suddenly with paint buckets which rattle loudly. This may be surprising.
- 40 mins in: During the song, *World of Colour*, the drummer and percussionist, , will climb down the set from her box and begin playing the set like drums! This is loud.
- 47 mins in: During the song *Mary, Mary & Marie* and *Fifi Superspy (Mary Reprise)* there is smoke on stage and lot of loud noises and flashing lights. We have amended some of these for the show, but it will still be quite bright.
- 1hr 9 mins in: the actor playing Anne Frank enters. This actor is a young person and has not been in the rest of the show.
- 1hr 15 mins in: A large glowing arrow is lowered from the ceiling to show Jade "You're here".
- 1hr 17 mins in: Miss Johnson walks through the audience looking for Jade.
- 1hr 18 mins in: During the song *Fantastically Great*, people in the audience may start clapping along with the song, but you do not have to if you do not want to.

After the final song of the show, *Fantastically Great*: There is a mega mix where all the actors thank the band, do their bows and sing a mashup of all the songs in the show. You are welcome to join in clapping and singing along and can also film this part too.